



ENGLISH

School Level Examination

GRADE

1

DO NOT OPEN THIS BOOKLET UNTIL INSTRUCTED TO DO SO

- * All questions are compulsory.
- * Read the instructions on the **ANSWER SHEET** and fill in your **NAME, CLASS and OTHER INFORMATION.**

To mark your choice of answer by darkening the circles in the Answer Sheet, use an **HB Pencil** only.

- * You **MUST** record your answers on the **ANSWER SHEET.**
- * There are 30 **MULTIPLE CHOICE QUESTIONS.** Use the information provided to choose the **BEST** answer among the four possible options.

On your **ANSWER SHEET** fill in the oval that matches your answer.

- * Marks are **NOT** deducted for incorrect answers.
- * Return the **Answer Sheet** to the invigilator at the end of the examination.
- * Write your Roll No. on the Question Paper too and take it home for future reference.
- * You are **NOT** allowed to use a calculator.

You may use a ruler and spare paper for rough work.

(This paper contains 30 multiple choice questions. Each question has four choices (A), (B), (C) and (D), out of which only ONE is correct).

1. Rearrange the letters and complete the sentence with the correct word.

I saw a _____ (RGITE) in the zoo.

- (A) Train (B) Tiger
(C) Tulip (D) Tumbler

2. Choose the odd one out.

- (A) Fin (B) Him
(C) Bin (D) Tin

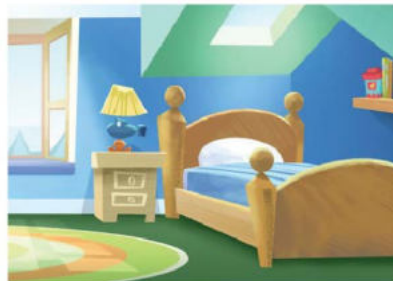
3. Identify the name of the picture given below.



- (A) Table clock (B) Wall clock
(C) Wrist watch (D) Sand clock

4. Fill in the blank and create a new word.

_____ + room =



- (A) Bed (B) Bench
(C) Class (D) Dining

9. Identify the object from the picture.



- (A) Fridge (B) Air Conditioner
(C) Microwave Oven (D) Washing Machine

10. Choose the correct plural form of the singular noun.

City

- (A) Citi (B) Citis
(C) Cities (D) Citys

11. Choose the opposite for the given word.

Warm

- (A) Icy (B) Hot
(C) Cool (D) Frozen

12. Which body part helps us to do the following function?

Blinking

- (A) Mouth (B) Eyelids
(C) Nose (D) Teeth

13. Your father's nephew is your _____.

- (A) mother (B) cousin
(C) sister (D) uncle

14. If you want to play some video games, you go to _____.



- (A) a field
- (B) an arcade
- (C) a library
- (D) a zoo

15. Choose the option that is NOT a verb.

- (A) Dance
- (B) Break
- (C) Fog
- (D) Pull

16. If GRANDFATHER : GRANDMOTHER then Bride : _____ ? _____

- (A) Bachelor
- (B) Maid
- (C) Groom
- (D) Lass

17. Choose the correct option.

My father tells me that our grandfather has _____ followed this routine for several years.

- (A) a
- (B) an
- (C) the
- (D) none of the above

18. Which of these is not plural?

- (A) Fishes
- (B) Knives
- (C) Scissors
- (D) Lakes

19. Choose the correct preposition.



There is a lot of unity _____ this team.

- (A) at
- (B) below
- (C) within
- (D) from

20. Which word matches the given action?

Frying

- (A) Candy (B) Biscuit
(C) Juice (D) Omelette

21. Choose the correct verb to keep the sentence in Simple Future Tense.

You will _____ a lot of friends there.

- (A) made (B) making
(C) has made (D) make

22. I go to space and have a special suit.

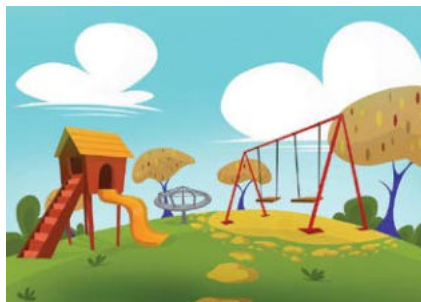


Who am I?

- (A) Scientist (B) Astronaut
(C) Pilot (D) Carpenter

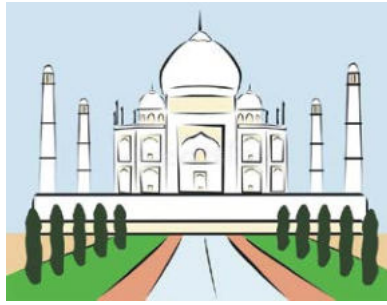
23. In the following sentence, choose the simple present tense form of the verb to fill in the blank.

Saloni _____ to the park everyday.



- (A) went (B) will go
(C) gone (D) goes

24. I went to Agra. I visited _____ Taj Mahal there.



- (A) an (B) a
(C) the (D) none of the above

25. Fill in the blank using the correct preposition.

The candies are kept _____ the jar.

- (A) on (B) in
(C) into (D) at

26. Bread : chew :: T.V. : _____

- (A) see (B) watch
(C) drink (D) play

27. Please pour milk _____ the glass.



- (A) in (B) on
(C) into (D) over

Read the passage and answer the questions 28 to 30.

Milk is a complete food. It is a white liquid. It is a good food for all people. It is necessary for the old, the sick and children. We get milk from cows and buffaloes. Different kinds of food are made from milk. We get curd, cheese, ghee, sweets and butter from milk. We all should drink milk every day. It is very healthy.



28. We get milk from _____ .
- (A) Trees (B) Ox
(C) Only cows (D) None of the above
29. Choose the TRUE statement from the following.
- (A) Milk is made from ghee. (B) We eat milk.
(C) Milk is a complete food. (D) Sick people do not need milk.
30. Which of these does not come from milk?
- (A) Curd (B) Cornflakes
(C) Sweets (D) Cheese

Acknowledgement

Copyright in this booklet is owned by Orange Education Pvt Ltd, unless otherwise indicated. Every effort has been made to trace and acknowledge copyright. Orange Education Pvt Ltd apologises for any accidental infringement and welcome information to redress the situation.

For more information, please visit our website: www.orangeeducation.in



Website: www.orangeeducation.in



@OrangeEducationPvtLtd