



National Level Examination
NLE 2024

Cyber Grade 2

Subject Code:

5	0	1
---	---	---

Total Questions: 30

Time: 1 hour

DO NOT OPEN THIS BOOKLET UNTIL INSTRUCTED TO DO SO

- All questions are compulsory.
- Read the instructions on the **ANSWER SHEET** and fill in your **NAME, CLASS** and **OTHER INFORMATION**.
- To mark your choice of answer by darkening the circles in the **ANSWER SHEET**, use an **HB PENCIL** only.
- You **MUST** record your answers on the **ANSWER SHEET** only.
- There are **30 MULTIPLE CHOICE QUESTIONS**. Use the information provided to choose the **BEST** possible answer among the four options. On your **ANSWER SHEET** fill in the circle that matches your answer.
- $\frac{1}{2}$ **MARK** will be deducted for every **WRONG ANSWER**.
- Return the **ANSWER SHEET** to the invigilator at the end of the examination.
- You are **NOT** allowed to use a calculator. You may use a ruler and spare paper for rough work.



This question paper contains a total of 30 questions divided into three sections—A, B and C. Read the instructions carefully before attempting these questions.

Section A (Logical Reasoning)

1. Complete the pattern.



(A) 23

(B) 20

(C) 22

(D) 24

2. Which line is the longest?

Line 1

Line 2

Line 3

Line 4

(A) Line 1

(B) Line 2

(C) Line 3

(D) Line 4

3. How many triangles are there in the following figure?

(A) 6

(B) 8

(C) 10

(D) 12



4. Which is the next figure in the given pattern?



(A)

(B)

(C)

(D)



5. The minute hand takes _____ minutes to move from 1 to 8.
- (A) 20
 - (B) 30
 - (C) 25
 - (D) 35

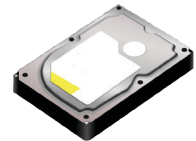


Section B (Subject Specific)


6. Read the following statements regarding Keyboard and select the incorrect one.
- (A) It is an output device.
 - (B) It is used to give instructions to the computer by typing text and numbers.
 - (C) We type letters, numbers and symbols using a keyboard.
 - (D) Both (B) and (C)

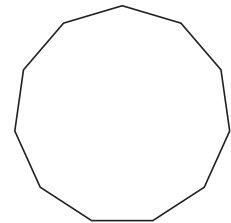
7. Identify the following image:

- (A) Compact Disc
- (B) Digital Versatile Disc
- (C) Pen Drive
- (D) Hard Disk



8. Which of the following tool is used to draw the given shape?

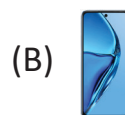
- (A) 
- (B) 
- (C) 
- (D) 



9. Read the following statements and select the CORRECT one.

- (A) Tux Paint is a program to draw and colour.
- (B) It makes drawing and painting easy and fun with Tux Paint.
- (C) Tux, the Bear helps at every step by giving tips while drawing and colouring.
- (D) Both (A) and (B)

10. Shanya wants to play the given game. Choose the suitable device for her.





11. Look at the given picture and choose the correct sequence according to the increasing size of computers.



- (A) 1, 2, 3, 4 (B) 4, 2, 1, 3
(C) 3, 2, 1, 4 (D) 2, 1, 4, 3

12. Which of these has touchscreen technology?



P

Q

- (A) Only P (B) Only Q
(C) Both P and Q (D) None of these

13. Choose the INCORRECT statement about the computer.

- (A) Computers are used for controlling machines in the hospitals while performing surgeries.
(B) In the computer lab., computers are used to learn different things.
(C) Computers are used to maintain records.
(D) Computers are used at home to make medical reports.

14. _____ are used to hear the sound without causing any disturbance.

- (A) Speakers (B) Headphones
(C) Microphones (D) Mouse

15. Arinya wants to print the time table of the school on a paper. Which device is suitable to do so?

- (A) Scanner (B) Keyboard
(C) Mouse (D) Printer



16. Neha is typing a story. She wants to start a new paragraph. Which key will she choose to do so?



17. Read the following statements.

- (i) Pencil tool is used to draw with a freehand.
- (ii) Brushes tool is used to create freehand drawing.
- (iii) Text tool is used to type text or message in the drawing area.
- (iv) Magnifier tool is used to get a bigger and closer view of the drawing.
- (v) Color picker tool is used to pick a colour from the picture and use it to colour.

Select the correct option.

(A) (i), (iii) and (v) only

(B) (ii) and (iv) only

(C) (iii) and (v) only

(D) All of these

18. The given icon is used in _____.

(A) Excel

(B) Word

(C) Tux Paint

(D) None of these



19. You can create your own colours in Paint. Just click on the _____ button in the colors group.

(A) Create colors

(B) Go colors

(C) Edit colors

(D) Use colors

20. Which of the following statements hold(s) true about computer?

Statement 1: Computer makes our work easier.

Statement 2: The use of a computer for a long period of time is harmful to our eyes.

(A) Only Statement 1

(B) Only Statement 2

(C) Both Statement 1 and Statement 2

(D) Neither Statement 1 nor Statement 2





21. Select the best definition of the term “App” from the given options.
- (A) A program that is not found in smartphones.
 - (B) A large program that erases other programs in a mobile phone.
 - (C) A small program that is found in a mobile phone.
 - (D) All of these

22. Select the tool that cannot be used to draw shapes.



- (D) Both (A) and (B)

23. What would be the result of the given steps?

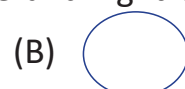
Step 1: Select a Rectangle tool from the Shapes option.

Step 2: Click and drag the mouse to draw a rectangle shape.

Step 3: Select .

Step 4: Choose your favourite colour from the Color palette.

Step 5: Now, go to the rectangle shape and right click inside it with mouse.



24. Select the correct device that is used to point an item on the screen.

(A) Printer

(B) Headphones

(C) Microphone

(D) Mouse

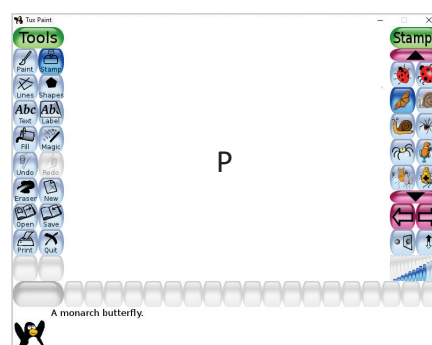
25. What is P in the following Tux Paint window?

(A) Toolbar

(B) Selector





(C) Canvas

(D) Help Area





Section C (Competency Enhancement)

26. Ravi wants to give more than one space at a time without using the Spacebar key. Which key should he use to do so?
- (A) Enter key (B) Shift key
(C) Backspace key (D) Tab key
27. Manu has made a drawing in Tux Paint. Now he wants to write his name on it. Which tool should he use to do so?
- (A)  (B)  *Abc*
(C)  (D) 
28. Arun's father has purchased a new computer for him. He wants to play the game on the computer but does not know which part is necessary to do so. Suggest him the part of the computer to play the game.
- (A) Speakers (B) Mouse
(C) Printer (D) Pen Drive
29. Sameer wants to shut down his father's computer. Which option should he click to do so?
- (A) Restart (B) Shut Down
(C) Log Off (D) Admin
30. Rohit is a police man. He wants to learn the uses of computer in police station. Suggest him the use of computer in a police station.
- (A) Tracking the record of criminals and drawing their sketches
(B) Forecasting weather
(C) Designing and printing books, newspapers and magazines
(D) Maintaining records of patients



web



click

