



National Level Examination  
NLE 2024

# SCIENCE

## Grade 5

Subject Code: 

3	0	1
---	---	---

Total Questions: 30

Time: 1 hour

**DO NOT OPEN THIS BOOKLET UNTIL INSTRUCTED TO DO SO**

- All questions are compulsory.
- Read the instructions on the **ANSWER SHEET** and fill in your **NAME, CLASS** and **OTHER INFORMATION**.
- To mark your choice of answer by darkening the circles in the **ANSWER SHEET**, use an **HB PENCIL** only.
- You **MUST** record your answers on the **ANSWER SHEET** only.
- There are **30 MULTIPLE CHOICE QUESTIONS**. Use the information provided to choose the **BEST** possible answer among the four options. On your **ANSWER SHEET** fill in the circle that matches your answer.
- **$\frac{1}{2}$  MARK** will be deducted for every **WRONG ANSWER**.
- Return the **ANSWER SHEET** to the invigilator at the end of the examination.
- You are **NOT** allowed to use a calculator. You may use a ruler and spare paper for rough work.

SCIENCE



This question paper contains a total of 30 questions divided into three sections - A, B and C. Read the instructions carefully before attempting these questions.

**Section A (Logical Reasoning)**

1. Complete the following series.

1, 1, 2, 3, 5, 8, 13 \_\_\_\_\_, \_\_\_\_\_.

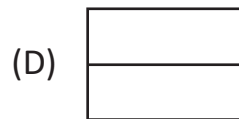
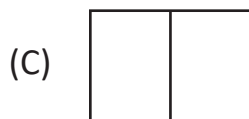
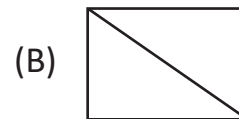
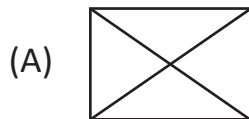
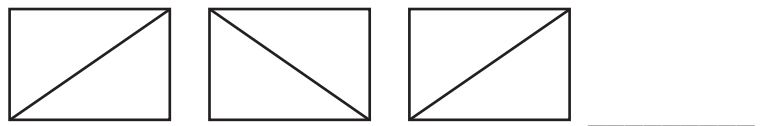
(A) 21, 34

(B) 21, 35

(C) 21, 36

(D) 21, 37

2. What comes next in the following series?



3. Which word CANNOT be made from the letters of the given word?

**Teachers**

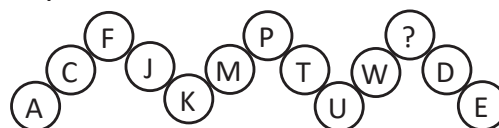
(A) Reach

(B) Chair

(C) Cheer

(D) Search

4. Which letter replaces the question mark?



(A) X

(B) Z

(C) A

(D) B

5. In the following number series, how many times an odd number is followed by two even numbers?

3 4 5 6 6 7 8 8 9 9 2 3 1 6 8 5 4 0 7 8 2 3

(A) 7

(B) 5

(C) 4

(D) 6



Section B (Subject Specific)

6. Which of these rocks is majorly made up from the remains of shells of sea animals?
- (A) Conglomerate (B) Sandstone  
(C) Limestone (D) Granite
7. The force which makes running possible is \_\_\_\_\_ .
- (A) muscular force (B) frictional force  
(C) electrostatic force (D) Both (A) and (B)
8. Which of the following is a communicable disease?
- (A) Tuberculosis (B) Rickets  
(C) Goitre (D) Anaemia
9. Which of the following statements are correct?
- Statement-I:** Deforestation conserves soil.  
**Statement-II:** Top soil is the most fertile.  
**Statement III:** Soil has different compositions at different places.  
**Statement-IV:** Soil is needed for the growth of plant.
- (A) Statement-I and II (B) Statement-II, III and IV  
(C) Statement-I, II and III (D) Statement-I, III and IV
10. Plastic is a good insulating material for ice cubes because it \_\_\_\_\_ .
- (A) is expensive (B) conducts electricity well  
(C) does not conduct heat (D) increases friction with the water
11. Most solids have fixed shape and volume because \_\_\_\_\_ .
- (A) molecules are closely packed  
(B) intermolecular space is least  
(C) force of attraction between particles is maximum  
(D) All of these





12. Match the following columns and select the correct option.

Column I	Column II
p. Energy giving food	(i) Roughage and water
q. Body building food	(ii) Proteins
r. Protective components	(iii) Vitamins and minerals
s. Digestive components	(iv) Carbohydrates

(A) p-(iv), q-(ii), r-(iii), s-(i)

(B) p-(i), q-(ii), r-(iii), s-(iv)

(C) p-(ii), q-(iii), r-(iv), s-(i)

(D) p-(iv), q-(iii), r-(ii), s-(i)

13. Floods can be prevented by \_\_\_\_\_ .

(A) cutting forests

(B) removing soil cover

(C) making land sloppy

(D) planting trees on slopes

14. The state of water can be changed by changing the temperature by

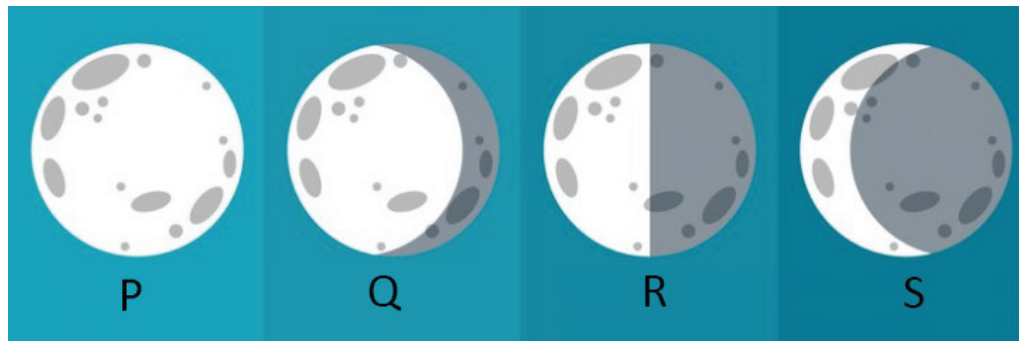
(A) heating

(B) cooling

(C) Both (A) and (B)

(D) None of these.

15. Identify the correct labelling of the given phases of moon.



(A) P- Full Moon; Q- Waxing Gibbous; R- Last quarter; S- Waning Crescent

(B) P- Full Moon; Q- Waxing Gibbous; R- First quarter; S- Waning Crescent

(C) P- New Moon; Q- Waxing Gibbous; R- Last quarter; S- Waning Crescent

(D) P- Full Moon; Q- Waning Crescent; R- Last quarter; S- Waxing Gibbous



16. In which state do you find the type of house given below?



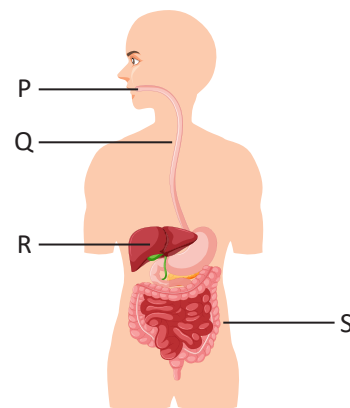
- (A) Chennai (B) Delhi  
(C) Odisha (D) Jammu and Kashmir

17. Which system helps the body to get rid of water?

- (A) Nervous system (B) Skeletal system  
(C) Excretory system (D) Digestive system

18. The given figure shows human digestive system with some parts labelled as P, Q, R and S. Which of the following labelled parts is correctly matched with its function?

- (A) Q – Food is mixed with digestive juices  
(B) P – Digestion starts here  
(C) R – Most of the water is absorbed here  
(D) S – Digestion of food is completed here



19. The teacher explained to students that petals are also present in plants. For which part of the plant is this statement true?

- (A) Root (B) Stem  
(C) Leaf (D) Flower

20. Which part of the plant grows into the shoot system?

- (A) Plumule (B) Radicle  
(C) Cotyledon (D) Micropyle





21. Which among the following is the fastest runner?  
 (A) Ostrich (B) Kiwi  
 (C) Emu (D) Rhea
22. Which part of brain helps to think, learn and remember?  
 (A) Cerebrum (B) Cerebellum  
 (C) Medulla (D) Spinal cord
23. Which of the following are correct statements?  
 I. Do not read while lying down.  
 II. Do not read in dim light.  
 III. Do not read in moving bus.  
 IV. Do not watch TV or work on computer for long time.  
 (A) I and II (B) II and III  
 (C) I, II and III (D) All of these
24. Which of the following liquids is used in a thermometer?  
 (A) Water (B) Alcohol  
 (C) Mercury (D) Petrol
25. Which of the following is a source of magnesium?  
 (A) Calcite (B) Dolomite  
 (C) Marble (D) Gypsum

### Section C (Competency Enhancement)

26. Study the given table.

Material	Water-proof	Conducts heat	Elastic
X	✓	✗	✓
Y	✓	✓	✗
Z	✗	✗	✗

Select the option that correctly identifies any two of them.

- (A) X – Rubber, Z – Copper (B) Y – Aluminium, Z – Wood  
 (C) X – Wood, Y – Iron (D) Y – Iron, Z – Glass



27. Sunita is going to Rajasthan for her winter vacation. Which type of following trees will she most probably find there?
- (A) Coconut (B) Spruce  
(C) Pine (D) Cactus
28. In a nearby sea shore, a large number of dead fish drifting towards the shore. Some dead birds with sticky black coating on feathers were also seen. What could the most probable reason for this loss?
- (A) Earthquake (B) Sandstorm  
(C) Tornado (D) Oil spill
29. Simran paired types of lever with its examples together but in doing so she made an incorrect pair. Select the incorrect pair.
- (A) 1<sup>st</sup> class lever – Seesaw  
(B) 2<sup>nd</sup> class lever – Scissors  
(C) 3<sup>rd</sup> class lever – Lifting bucket full of water  
(D) None of these
30. Young one of P breathes through gills in water whereas adult of P breathes through its lungs on land. From the given options identify P.



