



School Level Examination

SLE 2024

SET:

I

GRADE
5

SCIENCE

Subject Code:

3	0	1
---	---	---

Total Questions: 30

Total Marks: 30

Time: 1 hour

DO NOT OPEN THIS BOOKLET UNTIL INSTRUCTED TO DO SO

- All questions are compulsory.
- Read the instructions on the **ANSWER SHEET** and fill in your **NAME, CLASS** and **OTHER INFORMATION**.
- To mark your choice of answer, darken the circles in the **ANSWER SHEET**, use an **HB PENCIL** only.
- You **MUST** record your answers on the **ANSWER SHEET** only.
- There are **30 MULTIPLE CHOICE QUESTIONS**. Each question carries one mark. Use the information provided to choose the **BEST** possible answer among the four options. On your **ANSWER SHEET** darken the circle that matches your answer.
- Marks are **NOT** deducted for incorrect answers.
- Return the **ANSWER SHEET** to the invigilator at the end of the examination.
- You are **NOT** allowed to use a calculator. You may use a ruler and spare paper for rough work.

This question paper contains a total of 30 questions divided into three sections—A, B and C.

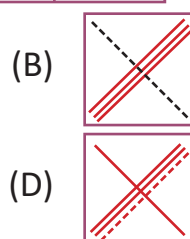
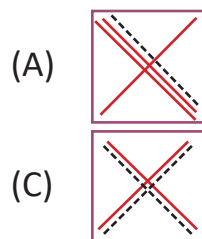
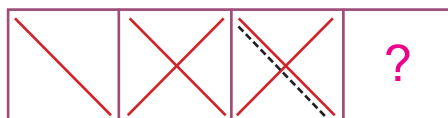
Section A (Logical Reasoning)

1. Which of the following words cannot be formed from the given word?

F U R N I T U R E

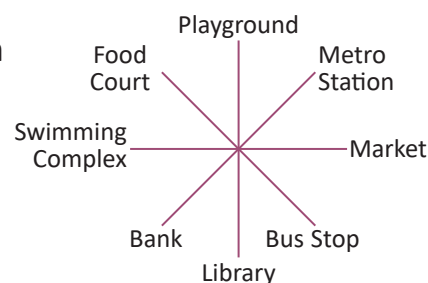
- (A) FUN (B) NATURE
(C) RETURN (D) TURN

2. Which of the following options will replace the question mark in the given figure pattern?

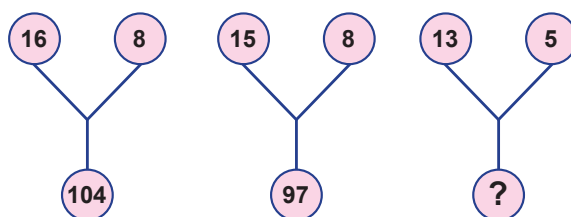


3. If I am facing the Swimming Complex and I turn 135° in clockwise direction, then what will I be facing finally?

- (A) Food Court (B) Bus Stop
(C) Metro Station (D) Library



4. Which number will replace the question mark in number bond given below?



- (A) 37 (B) 42
(C) 47 (D) 52

5. Amit celebrates his birthday on third Saturday of July 20XX. The date immediately after his birthday will be _____.

- (A) 19th (B) 21st
(C) 22nd (D) 20th

July 20XX						
S	M	T	W	T	F	S
			1	2	3	4
5	6	7	8	9	10	11
12	13	14	15	16	17	18
19	20	21	22	23	24	25
26	27	28	29	30	31	

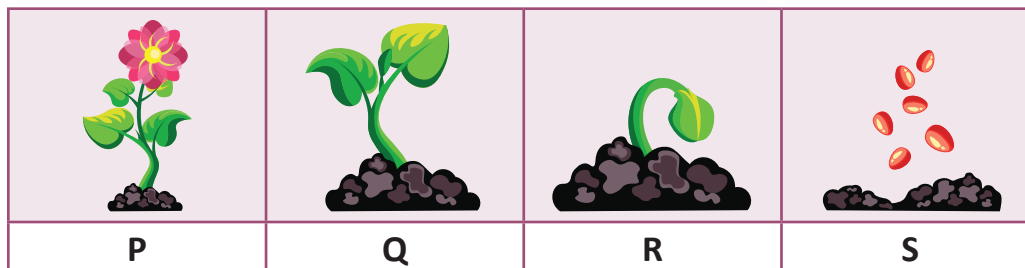
Section B (Subject Specific)

6. Match the column I with column II and select the correct option.

Column I	Column II
p. Caravan	(i) Multi-storeyed building
q. Stilt house	(ii) Made of ice blocks
r. Houseboat	(iii) House on wheels
s. Igloo	(iv) Floating house
t. Skyscraper	(v) House above surface of soil

- (A) p- (iv), q- (v), r-(i), s-(iii), t-(ii) (B) p- (ii), q- (v), r-(i), s-(iii), t-(iv)
 (C) p- (iii), q- (v), r-(iv), s-(ii), t-(i) (D) p- (v), q- (ii), r-(iv), s-(iii), t-(i)

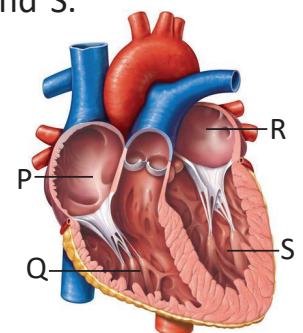
7. Arrange the given stages of life cycle of a plant in correct sequential order.



- (A) P → Q → R → S (B) S → R → Q → P
 (C) Q → R → S → P (D) R → S → P → Q

8. Refer to the given diagram and identify the labelled parts P, Q, R and S.

- (A) P-Right atrium, Q-Left atrium, R-Right ventricle, S-Left ventricle
 (B) P-Right ventricle, Q-Right atrium, R-Left atrium, S-Left ventricle
 (C) P-Right atrium, Q-Right ventricle, R-Left atrium, S-Left ventricle
 (D) P-Left atrium, Q-Left ventricle, R-Right atrium, S-Right ventricle

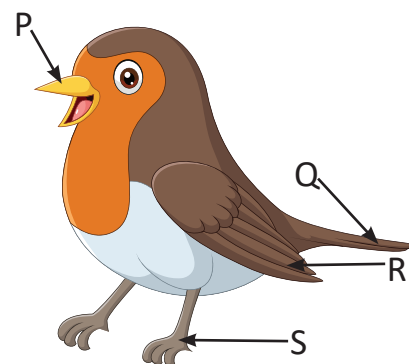


9. Select the pair in which disease is correctly matched with its mode of transmission.

- (A) Cholera-Air droplets (B) Tuberculosis-Air droplets
 (C) Dysentery-Air borne (D) Cold-Vector

10. Observe the given figure showing different parts of a bird and select the correct option.

- (A) P is used to eat food as birds do not have teeth.
- (B) Parts Q and R help the bird to fly.
- (C) S helps the bird to hold tree branches firmly.
- (D) All of these



11. Which of the following features is shared by a yak, a polar bear and a mountain goat?

- (A) Well developed horns
- (B) Storing water in their tissues
- (C) Thick hairy fur
- (D) Padded feet

12. In which of the following activities, matter is changing state?

- (A) Heating a pan of water until the water completely evaporates.
- (B) Pouring water from water-bottle to a glass.
- (C) Wrapping up dried clothes and put into almirah.
- (D) Transferring sugar into a storage container.

13. A city has a temperature of 25°C with partly cloudy skies. Weather forecasters are predicting that the temperature will drop with strong blowing of air during the day. Which type of weather is most likely to be for this area in the late afternoon?

- (A) Windy
- (B) Sunny
- (C) Snowing
- (D) Hailing

14. Identify the given personality.





- (A) Yuri Gagarin
- (B) Rakesh Sharma
- (C) Neil Armstrong
- (D) Chiaki Mukai

15. "Factories, hospitals, etc., discharge their liquid wastes into nearby water bodies". Which kind of pollution will take place by this action?

- (A) Air pollution
- (B) Noise pollution
- (C) Land pollution
- (D) Water pollution

16. Observe the given figures 'X' and 'Y' and select the correct option regarding them.

X 	Y 
(A) Gives us less calories	Gives us high calories
(B) Considered healthy food	Considered unhealthy food
(C) Provides roughage	Does not provide roughage
(D) Can make us obese	Protects us from diseases

17. Given below are the different layers of atmosphere. Arrange them in correct sequence starting from Earth and choose the correct option.

P	Q	R	S	T
Mesosphere	Exosphere	Troposphere	Thermosphere	Stratosphere

- (A) $P \rightarrow Q \rightarrow R \rightarrow S \rightarrow T$ (B) $Q \rightarrow R \rightarrow S \rightarrow P \rightarrow T$
 (C) $R \rightarrow T \rightarrow P \rightarrow S \rightarrow Q$ (D) $T \rightarrow P \rightarrow Q \rightarrow S \rightarrow R$

18. Read the sentences given below and choose the correct option stating T-True and F- False.

P: Seeds give rise to new plants when sown into the soil.

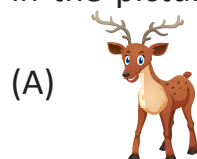
Q: Mushrooms reproduce with the help of seeds.

R: Bean and pea seeds are examples of monocot seeds.

S: Seeds of lotus are dispersed by water.

- (A) TTTT (B) FFFF
 (C) TFFT (D) TFFT

19. Select the animal that has similar eating habit as the bird shown in the picture.



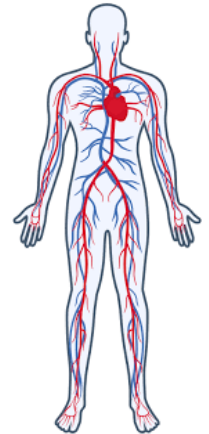
20. Observe the given plant and identify the mode of dispersal of seeds of this plant.

- (A) Wind (B) Water
(C) Animal (D) Explosion



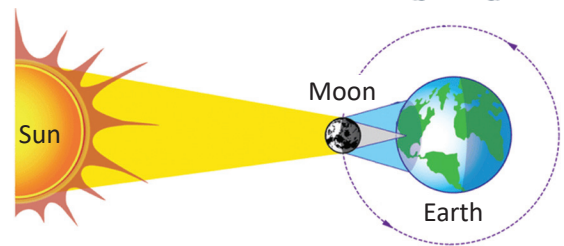
21. The given diagram shows an organ system. Which of the following functions is performed by this organ system?

- (A) It transports blood to various parts of the body.
(B) It controls all activities of the body.
(C) It helps in digesting food.
(D) It gives shape to the body.

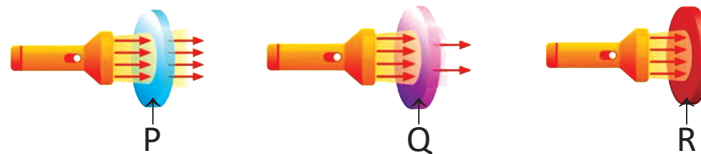


22. The given diagram represents _____.

- (A) Lunar eclipse
(B) Solar eclipse
(C) Revolution of Sun around the Earth
(D) None of these



23. Look at the given figures and identify the nature of screens – P, Q and R.



- (A) P-Opaque; Q-Translucent; R-Transparent (B) P-Transparent; Q-Translucent; R-Opaque
(C) P-Opaque; Q-Transparent; R-Translucent (D) P-Translucent; Q-Opaque; R-Transparent

24. Sunil accidentally drops a glass on the floor. What kind of energy conversion takes place in this situation?

- (A) Potential energy to Kinetic energy (B) Electrical energy to Mechanical energy
(C) Chemical energy to Muscular energy (D) None of these

25. Which of the following metals is obtained from the mineral ore 'magnetite'?

- (A) Mercury (B) Lead
(C) Copper (D) Iron

Section C (Competency Enhancement)

Direction (Q. 26 and 27): Refer to the given grid and answer the following questions.

26. Study the given word grid carefully and answer the following questions.

(i) How many desert plants is/are present?

(ii) How many mountain region plants is/are present?

(A) (i) – 3; (ii) – 2

(B) (i) – 4; (ii) – 2

(C) (i) – 3; (ii) – 3

(D) (i) – 1; (ii) – 3

27. How many plants whose seeds disperse through water is/are hidden in the given word grid?

(A) 3

(B) 2

(C) 1

(D) 4

C	E	N	M	T	H	K	L
A	T	N	T	L	F	O	D
C	T	I	O	P	I	N	E
T	Q	T	A	N	R	M	O
U	W	R	M	Y	B	J	D
S	T	H	J	I	L	B	A
C	O	C	O	N	U	T	R
E	V	N	M	K	L	O	I

28. Study the given table.

Material	Water-proof	Conducts heat	Elastic
X	✓	×	✓
Y	✓	✓	×
Z	×	×	×

Select the option that correctly identifies any two of them.

(A) X – Rubber, Z – Copper

(B) Y – Aluminium, Z – Wood

(C) X – Wood, Y – Iron

(D) Y – Iron, Z – Rubber

29. Simran paired types of lever with their examples but in doing so she made an incorrect pair. Select the INCORRECT pair.

(A) 1st class lever – Seesaw

(B) 2nd class lever – Scissors

(C) 3rd class lever – A pair of tongs

(D) 2nd class lever – Wheelbarrow

30. Young one of P breathes through gills in water whereas adult of P breathes through its lungs on land. From the given options identify P.



