



National Level Examination
NLE 2025

Cyber Grade 2

Subject Code:

5	0	1
---	---	---

Total Questions: 30

Total Marks: 30

Time: 1 hour

DO NOT OPEN THIS BOOKLET UNTIL INSTRUCTED TO DO SO

- All questions are compulsory.
- Read the instructions on the **ANSWER SHEET** and fill in your **NAME, CLASS** and **OTHER INFORMATION**.
- To mark your choice of answer by darkening the circles in the **ANSWER SHEET**, use an **HB PENCIL** only.
- You **MUST** record your answers on the **ANSWER SHEET** only.
- There are **30 MULTIPLE CHOICE QUESTIONS**. Use the information provided to choose the **BEST** possible answer among the four options. On your **ANSWER SHEET** fill in the circle that matches your answer.
- $\frac{1}{2}$ **MARK** will be deducted for every **WRONG ANSWER**.
- Return the **ANSWER SHEET** to the invigilator at the end of the examination.
- You are **NOT** allowed to use a calculator. You may use a ruler and spare paper for rough work.



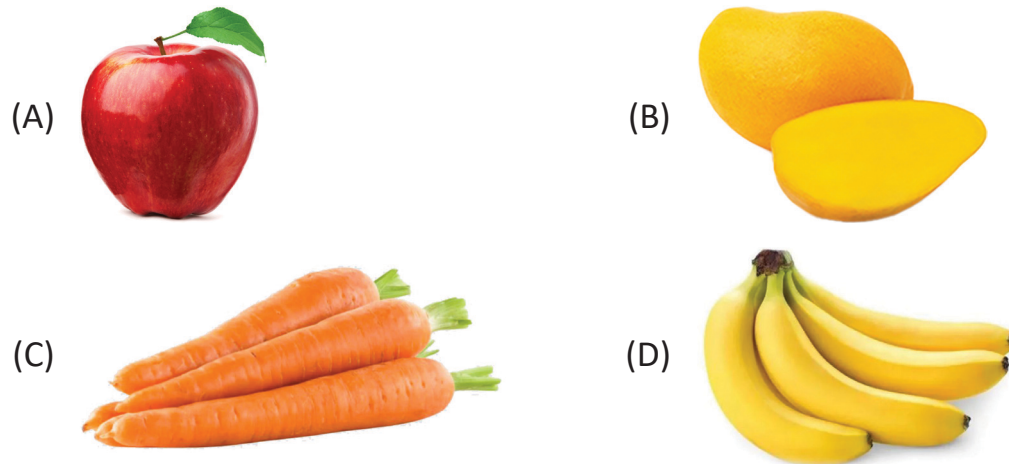
This question paper contains a total of 30 questions divided into three sections—A, B and C. Read the instructions carefully before attempting these questions.

Section A (Logical Reasoning)

1. Sara has 10 chocolates. She gives 3 to her brother and 2 to her friend. How many chocolates does she have left?

(A) 3 (B) 5
(C) 7 (D) 8

2. Which one does not belong to others?



3. What comes next?

0, 1, 0, 1, 0, ?

(A) 1 (B) 0
(C) 3 (D) 4

4. If TOM is coded as UPN, how is BOY coded in the same language?

(A) CPZ (B) CQZ
(C) CPY (D) BQZ



5. How many faces are there on a cube?

- (A) 8
- (B) 10
- (C) 12
- (D) 6

Section B (Subject Specific)

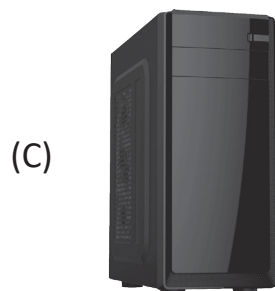
6. What is a computer mainly used for?

- (A) Writing programs
- (B) Eating food
- (C) Sleeping
- (D) None of these

7. Which part of the mouse is used to scroll pages?

- (A) Buttons
- (B) Pad
- (C) Light
- (D) Wheel

8. What part of a computer is known as its “brain”?



9. The small pictures on the computer screen are called:



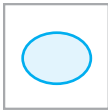

- (A) Stickers
- (B) Icons
- (C) Keys
- (D) Shapes

10. The “Undo Tool” in Tux Paint helps you to:

- (A) Erase the last action
- (B) Delete a shape
- (C) Save your work
- (D) Add new colours





11. What should you do if the mouse is not working properly?
(A) Press all the buttons
(B) Change the mouse settings
(C) Move the mouse in the opposite direction
(D) Check if it is plugged in
12. How do computers help in weather forecasting?
(A) Predicting the weather
(B) Cooking food
(C) Cleaning houses
(D) Making toys
13. Choose the INCORRECT statement about the computer.
(A) Computers are used for controlling machines in the hospitals while performing surgeries.
(B) In the computer lab, computers are used to learn different things.
(C) Computers are used to maintain records.
(D) Computers are used at home to make medical reports.
14. Which part of the computer helps it remember things even after it's turned off?
(A) Random Access Memory
(B) Monitor
(C) Hard drive
(D) Mouse
15. Which keys are at the top of the keyboard?
(A) Alphabet keys
(B) Function keys
(C) Number keys
(D) Special keys
16. Which shape is used to create a circle in Paint?
(A) 
(B) 
(C) 
(D) 
17. What is the main function of the CPU?
(A) Printing documents
(B) Storing data
(C) Processing information
(D) Playing music



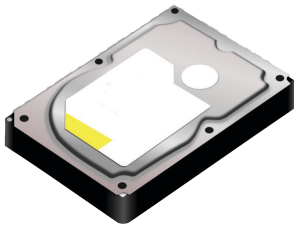
18. What is the first step to create a shape with rounded corners?

- (A) Select pencil tool
- (B) Select the Rounded Rectangle Tool
- (C) Select Eraser tool
- (D) Draw a straight line

19. Which of the following app is used for shopping clothes and shoes?

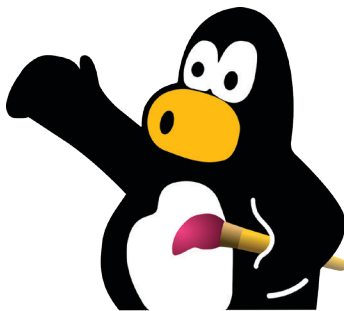


20. Identify the following image:



- (A) Compact Disc
- (B) Digital Versatile Disc
- (C) Pen Drive
- (D) Hard Disk

21. The below-given icon represents _____.

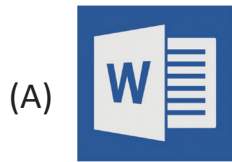


- (A) MS Excel
- (B) MS Word
- (C) Tux Paint
- (D) MS Powerpoint





22. Which of the Following app is used for drawing pictures on a computer?



23. What does an AI assistant do?

(A) Helps answer questions

(B) Runs fast

(C) Cleans the house

(D) Cooks food

24. Who invented the first computer mouse?

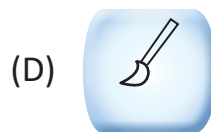
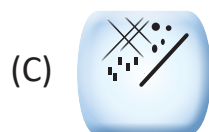
(A) Charles Babbage

(B) Alan Turing

(C) Douglas Engelbart

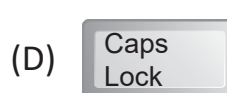
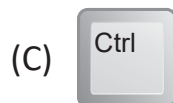
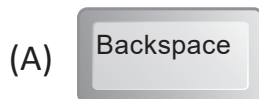
(D) Tim BernersLee

25. Which tool in Tux Paint allows you to open saved drawings and continue working on them?



Section C (Competency Enhancement)

26. If Raj wants all the letters he types to be in capital, which key should he press first?





27. Lily is making dinner and says, “Alexa, what’s a good recipe for pasta?”

What will Alexa do?

- (A) Give a recipe suggestion
- (B) Start a game
- (C) Play music
- (D) Turn off the oven

28. You use your phone to control your home lights and thermostat from anywhere. What is this an example of?

- (A) Virtual Reality
- (B) Smart Home
- (C) Cloud Computing
- (D) Video Streaming

29. Meera loves to watch cartoons on the computer after school. She uses a computer to play videos from the internet. What is Meera using the computer for?

- (A) To send emails
- (B) To watch videos
- (C) To create documents
- (D) To make phone calls

30. When you want to open a program on your computer, you use the mouse to move the arrow to the icon and click. What does the mouse do?

- (A) Turns the computer on
- (B) Makes the screen brighter
- (C) Types letters on the screen
- (D) Helps you move the cursor and select things



